

# A COASTAL STORY

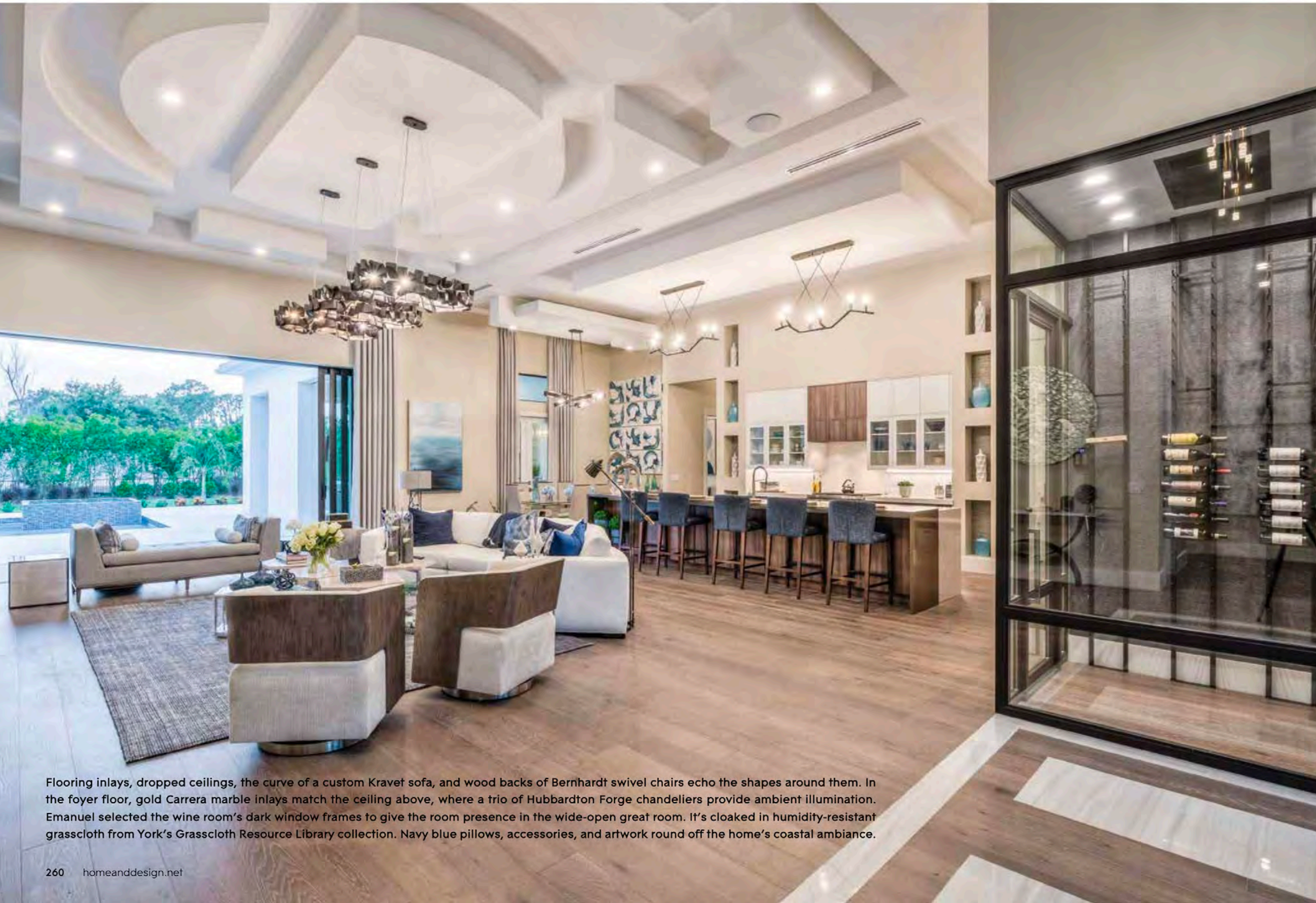
PINE RIDGE ESTATES HOME CAPTURES  
NAPLES' NARRATIVE — SAND, SURF, AND SUN





Wilfredo Emanuel of Wilfredo Emanuel Designs in Naples likes to tell a story through interior design. For this furnished custom estate, Emanuel attracts attention by layering the story with an underlying theme that captures a sense of place and throwing in a few plot twists — unexpected playful elements like a blue faucet, metallic pendants with shimmering gold fringes, and a rug fashioned from strips of cowhide.

This tale unfolds in Pine Ridge Estates, a sought-after Naples neighborhood revered for its central location and wide-open homesites — most an acre and larger. Built by STOCK Custom Homes and conveying a coastal contemporary countenance by Residential Designer Richard Guzman of R.G. Designs, many narratives unfold throughout its 4,672 square feet — family vacations in the Florida sunshine, holiday gatherings, entertaining on a grand scale, relaxing poolside. ▶



Flooring inlays, dropped ceilings, the curve of a custom Kravet sofa, and wood backs of Bernhardt swivel chairs echo the shapes around them. In the foyer floor, gold Carrera marble inlays match the ceiling above, where a trio of Hubbardton Forge chandeliers provide ambient illumination. Emanuel selected the wine room's dark window frames to give the room presence in the wide-open great room. It's cloaked in humidity-resistant grasscloth from York's Grasscloth Resource Library collection. Navy blue pillows, accessories, and artwork round off the home's coastal ambiance.



**Study:** The dark gray tones in this study, seen in the Upstream wallcovering and Mirage on the ceiling — both from York's Urban Oasis collection — combined with leather accents and a cowhide rug give the space a decidedly masculine look, according to Emanuel. Large artwork makes a statement behind an understated desk, while dark curtains frame an expansive window overlooking the pool. "People are using their home offices more today, and they don't want to be in a closed room," he says. "They can sit here, work on their laptop, and enjoy the outdoor views."

**Outdoor Living (Previous Spread):** Driftwood-toned furniture, a palette of navy blue and white, a cabana lounger, and chairs with caned backs and marine-grade cords mimic the atmosphere of a seaside resort. "Everyone comes to Naples for the beautiful weather and to enjoy the outdoors," explains Wilfredo Emanuel of Wilfredo Emanuel Designs. "The idea is to open the home and create outdoor living from inside." The dropped ceiling above the various alfresco destinations tie into adjoining indoor spaces to enhance the indoor-outdoor flow.





“It’s a good home for entertaining,” says Matt Sellick, president of STOCK Custom Homes. “The large lots in Pine Ridge Estates give us the opportunity to do a lot of things. This is a sprawling home that flows from inside to out, has a big yard, a large covered outdoor area with a fireplace and television, and a custom pool.” ▶

**Kitchen:** Interior designer Wilfredo Emanuel creates a clean-lined look by making the kitchen’s flat-paneled zebra wood cabinetry flush with the walls. The grain of the wood adds visual interest and warmth, complemented by white cabinetry on each side of the Wolf stove’s custom hood and quartzite countertops. Instead of traditional pendants above the island, Emanuel uses branch-like Hinkley Lighting fixtures with a black finish. The island sink’s blue faucet and upholstered chairs lend a nod to the home’s coastal vibe.

**Dining Room:** Art in the dining area picks up the blue hues from the kitchen and enhances the coastal theme. Sixteen 20-by-20-inch abstracts represent “splashes of water and sea,” says Emanuel, who created a gallery wall above a mirrored buffet and centered the glass-top Bernhardt table and Vanguard chairs under a graffit pendant with a dark smoke finish. The Renaissance European white oak wood flooring is used throughout the home.





**Den:** Sellick says the flexibility of a bonus room appeals to buyers who can repurpose it as a second office with a view. Zero-corner pocketing doors open to the pool and outdoor areas. There's also a full-service bar in the hallway with agate and mirrored backslashes. "People in Naples are into entertaining. This room is perfect for that," comments Emanuel. He amped up the coastal vibe with tones of navy blue, linen draperies, woven banana fiber chairs with a Bohemian aesthetic, and a patterned area rug similar to one anchoring the nearby outdoor sitting area.

**Kitchen Vignette:** Emanuel repeats zebrawood and white cabinetry in the adjoining mudroom and hidden-from-view catering kitchen "to continue the view from the kitchen." Gray-toned lustrous grasscloth from York Wallcoverings' Dazzling Dimensions collection — also used in tall, narrow niches in the kitchen — and contemporary artwork from Rosenbaum Art add texture and visual interest, says the designer, who sourced furniture and finishes from International Design Source in Naples.





*“It has a beautiful coastal feel that’s clean-lined and sophisticated with a touch of comfort. People want something easy and inviting,” says Emanuel.*

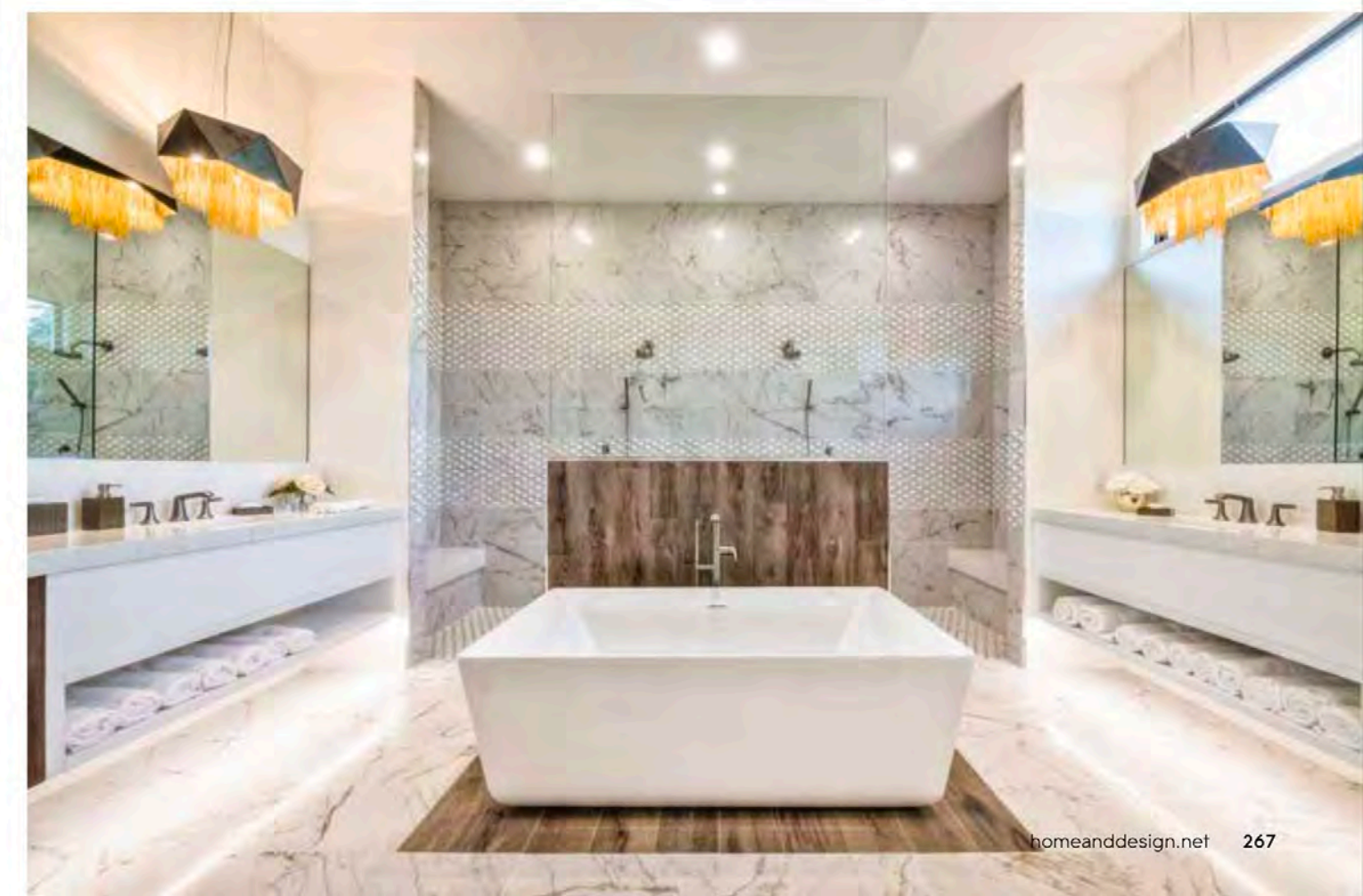
“This home is an amazing retreat, a resort that has everything for a family to enjoy the Naples weather,” explains Emanuel. “It has a beautiful coastal feel that’s clean-lined and sophisticated with a touch of comfort. People want something easy and inviting. They want to sit wherever they want, have events, and entertain. They don’t want to live in a museum they can’t touch or feel.”

The story is rich in detail, with shades of navy blue and white, and sculptural ceilings — the latter an Emanuel signature. The open-concept floor plan centers around the great room with its statement-making wine room, contemporary styled kitchen, and a catering kitchen tucked out of view. A bonus room, shown as a lounge area with a television, has pocketing doors opening to the lanai and a full bar in the hallway, which is also convenient to the three guest rooms.

Fringed by palm trees and tropical foliage, the covered lanai and outdoor spaces offer multiple destinations, including an inviting cabana lounger with billowing curtains that just beckons for a post-swim catnap or a good book. Instead of hiding the outdoor kitchen in a corner, Guzman floats it “to give a bar and grill feel.” ▶

**Master Bedroom:** Emanuel’s penchant for architectural ceilings and glitzy finishes are showcased in the master bedroom. “A master bedroom should be romantic,” he says. Wallpaper resembling wood accents the bed wall and continues on the ceiling to create a canopy above the upholstered Caracole bed. White mouldings frame the headboard, providing soft lighting while enhancing the room’s ethereal sensation, underscored with silver, white, gold, and metal finishes.

**Master Bath:** “I’m very big on lighting,” notes Emanuel, who loves painting with under-cabinet lighting and fun fixtures from Ferguson Bath, Kitchen & Lighting Gallery and Wilson Lighting, like the black matte chandeliers with gold fringe-like chains. “I like to create drama and a focal point in the master bathroom.” Here, he warms the room’s white Carrera marble surfaces and icicle quartzite countertops with tile inlays resembling oak planks behind and underneath the rectangular tub. The wood, he explains, “is exactly the same color used in the rest of the house. It creates a sequence from room to room.”







**Guest Bedroom:** The woven headboard, with matching footboard set within a tarnished nickel frame, flows seamlessly into the seagrass wallcovering. These elements introduce natural driftwood tones to this neutral guest room. Splashes of blue in the pillows and rug add to the by-the-sea ambiance seen throughout the rest of the home. Emanuel repeats the dropped block accents in the ceiling tray above this black-framed canopy bed with contrasting, light colored bedding.

**Powder Room:** In the powder room, a seaside color palette is expressed in the wavelike ripples of Candice Olson's Still Waters pattern for York's Tranquility collection and a two-toned vanity atop the sand-like drifts of glossy beige marble tile flooring. "The powder room should make a bold statement," explains Emanuel. A gold chandelier with onyx ornaments adds a touch of glamour, while a trio of white block cabinets above the commode provide additional storage.



Both the floorplan and the homesite offer flexibility. "Pine Ridge is a very desirable location with room to move," notes Guzman. "Generous setbacks appeal to someone who wants to expand the garage or add a guest house in the future."

Like the best-told stories, this estate sparks the imagination, creating a cliffhanger of sorts from the opening chapter to the final page — a place where many new stories will be written over time. ■



**Front Elevation:** "As artists we keep trying to stay ahead of the trends and come up with the next best thing," residential designer Richard Guzman says of this home's coastal contemporary architecture and floor plan. Horizontal elements in the front door and window frames, and a shelf above the tile-and-stucco-clad entry augment the contemporary vibe. "The dark frames of the window mullions play on the eye to create the feeling of more glass," notes Guzman.

**Written by** Nanci Theoret  
**Photography by** Matt Steeves Photography

**Interior Designer:**  
Wilfredo Emanuel Designs  
4760 Tamiami Trail North, Suite 2  
Naples, FL 34103  
239.315.7794  
www.wilfredoemanueldesigns.com

**Luxury Home Builder:**  
Stock Custom Homes  
2639 Professional Circle, Suite 101  
Naples, FL 34119  
239.249.6400  
www.stockcustomhomes.com

**Residential Designer:**  
R.G. Designs  
28071 Vanderbilt Drive  
Bonita Springs, FL 34134  
239.949.2929  
www.rgdesignsinc.com

**Resources:**  
Ferguson Bath, Kitchen &  
Lighting Gallery  
38 Goodlette-Frank Road South  
Naples, FL 34102  
239.963.0087  
www.build.com/ferguson

International Design Source  
6001 Taylor Road  
Naples, FL 34109  
239.591.1114  
www.ids1.com

Wilson Lighting  
2465 Trade Center Way  
Naples, FL 34109  
239.592.6006  
www.wilsonlighting.com