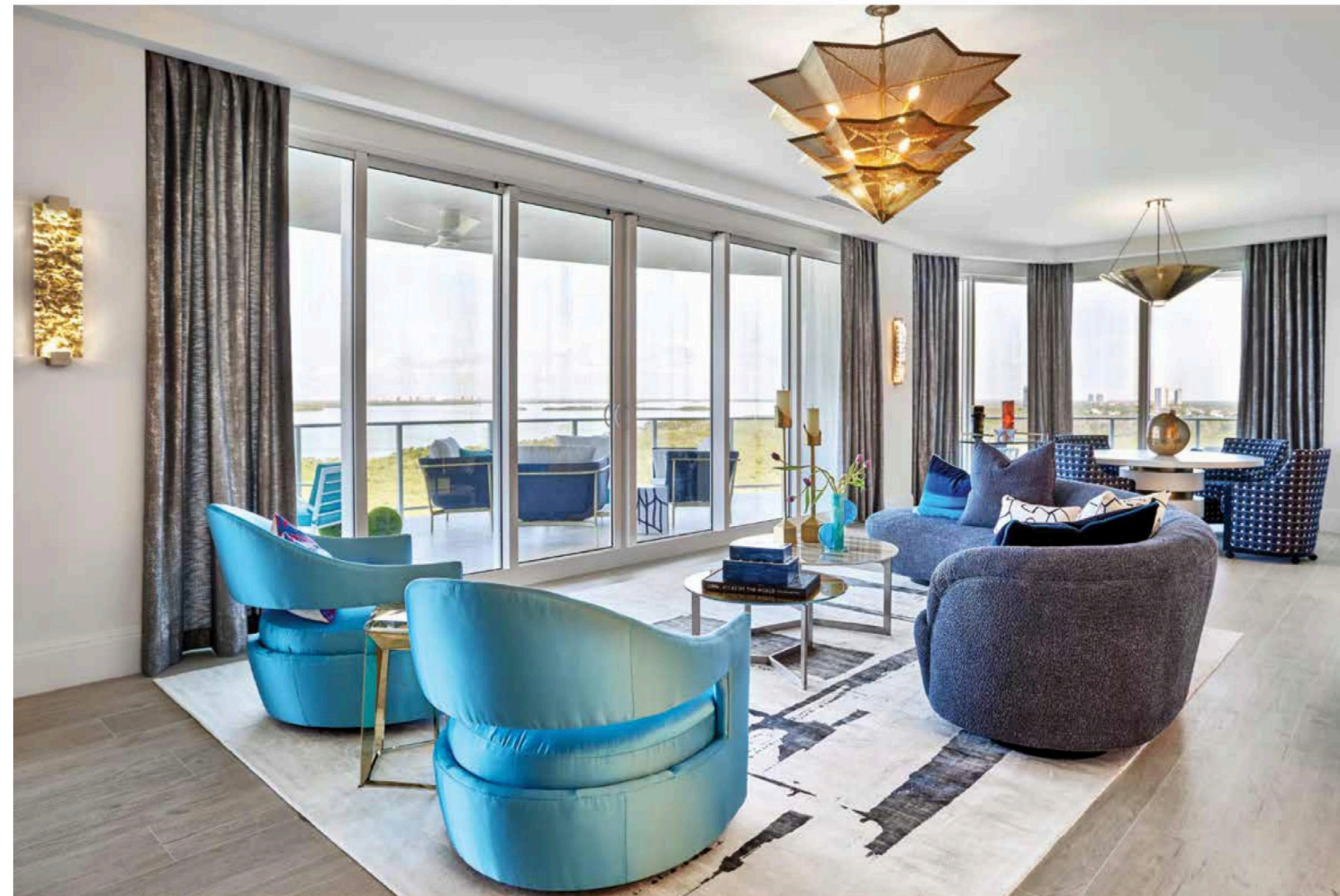




ART DECO MEETS FLORIDA CHIC

VIBRANT TURNKEY CONDO IS BRIGHT AND ELEGANT,
REFLECTING A PERFECT BLEND OF STYLES



Great Room: A pair of Hickory side chairs upholstered in Donghia turquoise silk continue the vibrant color of the entryway into the home's main living area, while a tiered Currey & Company light fixture introduces the same Art Deco aesthetic. The cocktail tables in the seating area are custom-painted to resemble marble. On the other side of the room, a round table creates a zone for playing games, while easily movable rolling chairs provide flexibility for repurposing the space.



Private Elevator Entry (Previous Spread): Immediately upon exiting the elevator to the condo, residents and guests are greeted with a splash of bright color in this modern-flavored art by Wooley Dutton. “The pink in the artwork is a vignette of fun color and the only vibrancy in the space, which makes it the focus statement of the vestibule,” Guild explains. The Art Deco patterned trim work and an Eicholtz brass and crystal chandelier also set the stage for the home’s design scheme.

Kitchen: The navy blue upholstery on the bar stools was one of the many thoughtful choices made by the design team. Guild explains, “We focused on certain powerful colors — cobalt blue, navy, magenta, vibrant turquoise — and found ways to move them around the space. This creates echoes that tie the design together and give the overall look a cohesive feel.” The vibrant hue plays beautifully with the sleek champagne cabinet pulls from Rocky Mountain Hardware.

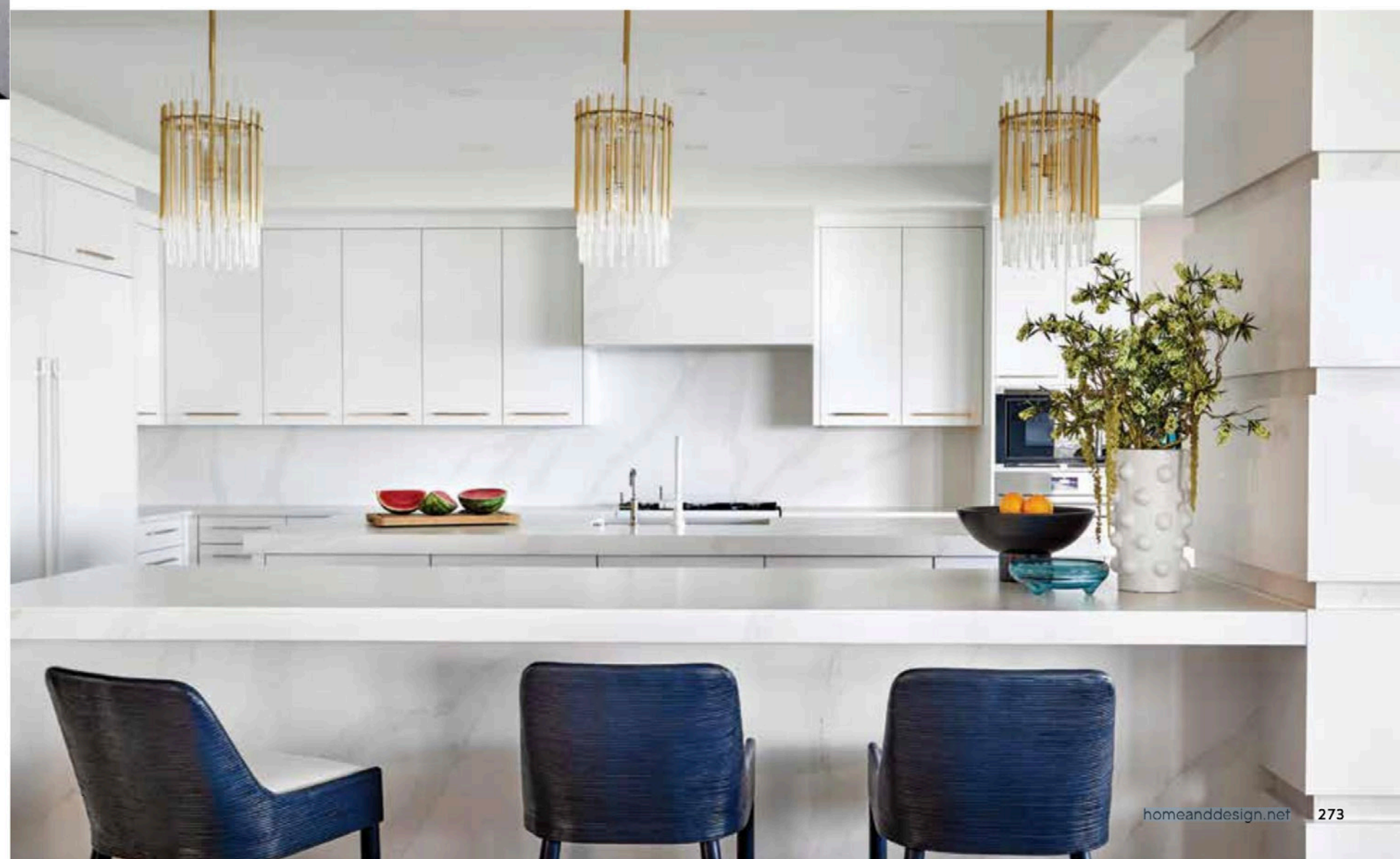
Great Room | Bar: A Burton James sofa provides the perfect gathering place for watching movies, especially when paired with alligator-patterned sofa trays by Square Feathers for snacks and drinks. “Portable sofa trays like these serve the same purpose as more stationary tables without taking up the footprint of high-traffic areas,” Guild explains. Upholstered ottomans pull out from under the cocktail table for even more seating. The zebrawood bar, topped with pink quartzite, is reminiscent of the wine closet in the dining room.



When clients approached Interior Designer Lisa Guild of LMG Design Consulting about remodeling their turnkey condominium in the OMEGA building, she knew it would be the perfect canvas for an eclectic mix of design styles and a chance to flex her team’s creative muscles.

Her clients’ needs were simple: to transform the blank canvas of their home into custom, high-end spaces that would accommodate their love of entertaining and family gatherings, as well as add creative rooms for remote work and a place to house their extensive wine collection, a product of their family’s roots in wine production. But with their backgrounds in art and furniture making and a lifetime of global travel resulting in a collection of meaningful mementos, they also wanted a vibrant design that reflects their unique tastes and stands apart from the typical look and feel of such a home. ►

Main Entry: The wall trim continues into the main entryway. “We wanted this space to have a lot of trim detail so it felt beautiful and had a sense of time and place. The glass and gold of the light fixture is elegant but not overly dressy, giving it an understated quality that allows the trim to take center stage,” says Casey O’Brien of LMG Design Consulting. Turquoise wallpaper on the ceiling draws the eye to the stunning water views inside the home.

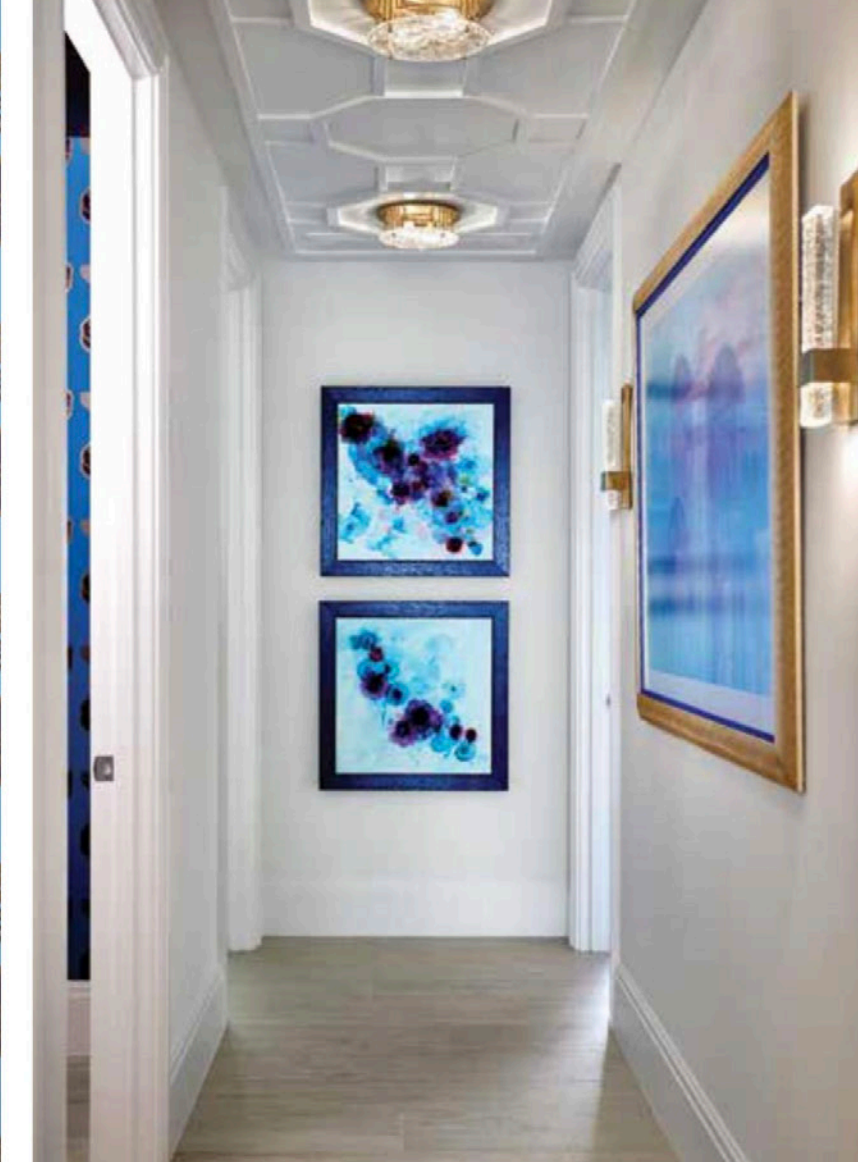
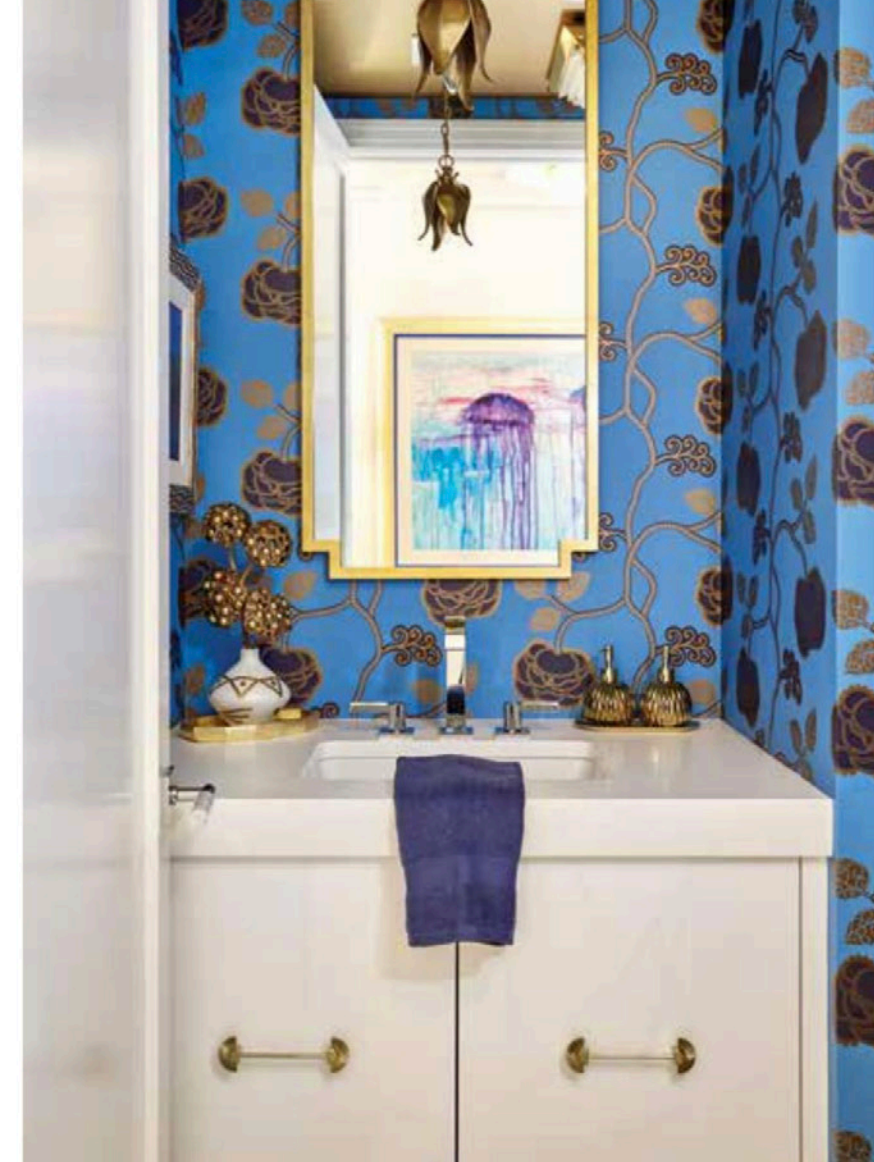




“The design is New York apartment meets Florida condo on the water,” Guild says. “The color palette was influenced by the ocean, but everything else was a nod to Art Deco. We wanted it to feel like it has some age, and we created that aesthetic of pre-war opulence using turn-of-the-century molding, lacquered walls, and art-forward, quiet backgrounds mixed with elevated materials.”

However, it was important to honor the natural setting of the home and highlight its overall features, which include sweeping views of the bay and bordering golf course and salt marshes.

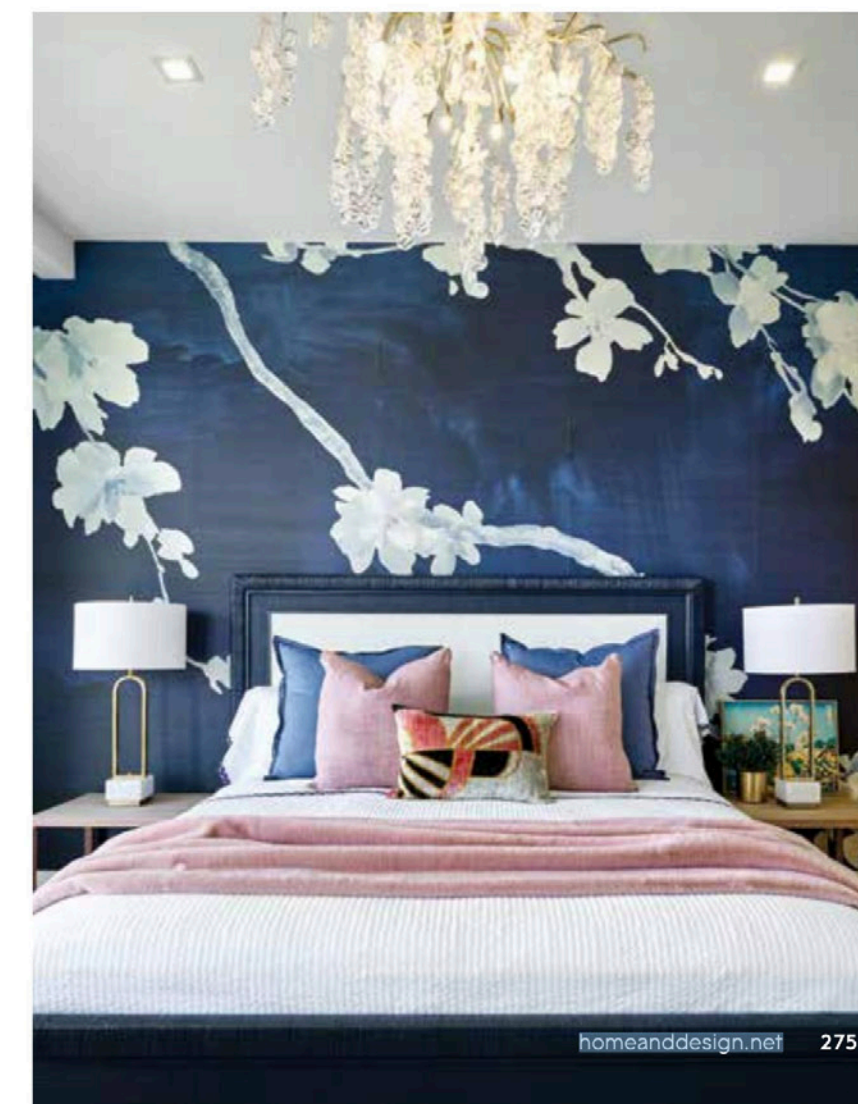
“We and the clients wanted the interiors to feel fresh and bright, like an extension of the exterior and the coastal flora and fauna,” adds Casey O’Brien, Design Consultant with LMG Design Consulting. “The beautiful window views that open up to water vistas required us to consider how each location in the condo would be treated, using lighting, ceiling designs, and furniture placement to highlight those views.” ▶



Hallway & Powder Bath: The client’s artwork is displayed in the hallway leading to the powder room. A strategically placed piece of art outside the room reflects in the mirror, adding a personal touch. The Schumacher wallcovering echoes shades of blue and black — the same tones in the dining room chairs — and the ginkgo leaf design matches the primary bathroom. The design team chose hardware with a matching leaf detail to complete the look.

Guest Bedroom: This Phillip Jeffries mural-like wallcovering adorned with white branches and orange blossoms sets the stage for a dramatic navy and pink guest bedroom. The color combination is a twist on the same blue and pink scheme used throughout the main living areas. A Revelation light fixture picks up more of the floral motif, while a set of Villa & House nightstands covered in pink grasscloth adds a soft, muted touch of feminine energy and whimsy.

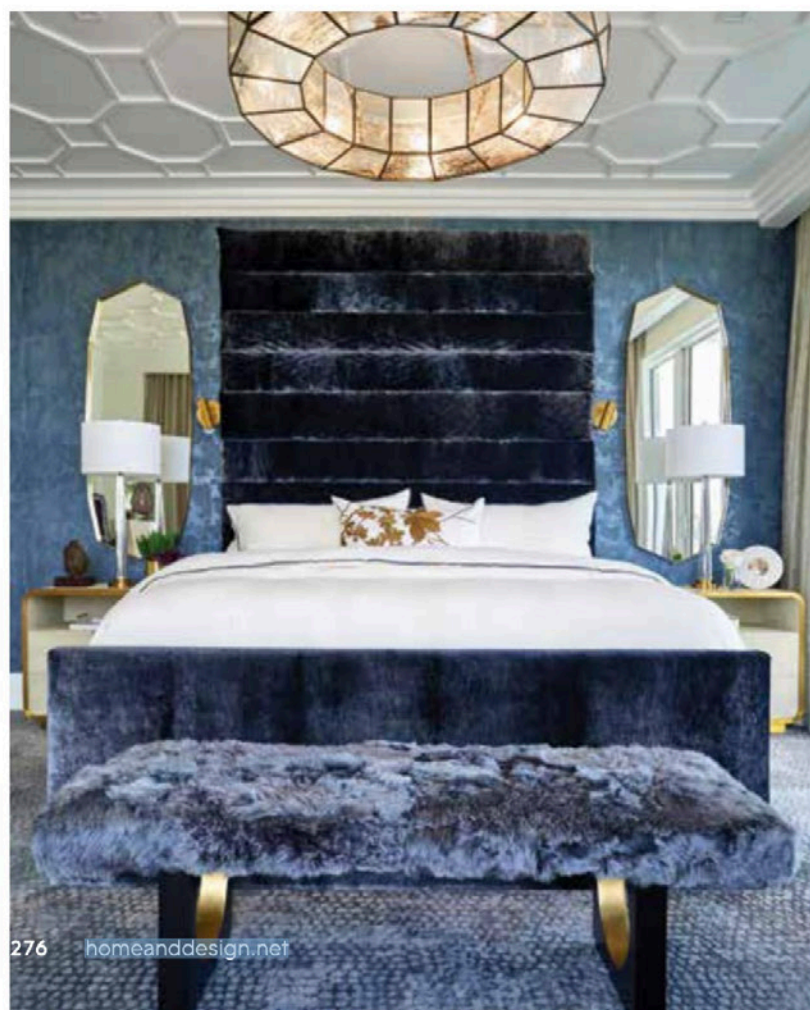
Dining Room: A Wasser table, imported from Italy, is intriguingly designed with a base that resembles butterfly wings, a nod to the client’s particular love of the winged insects. Three Currey & Company multidrop pendants cast refracted light on the zebrawood-clad bar, which is topped with underlit Cristallo quartzite. In keeping with the clients’ roots in the wine industry, the walk-in wine closet houses 800 bottles and includes a spot to display favorite selections behind the brass-handled doors.



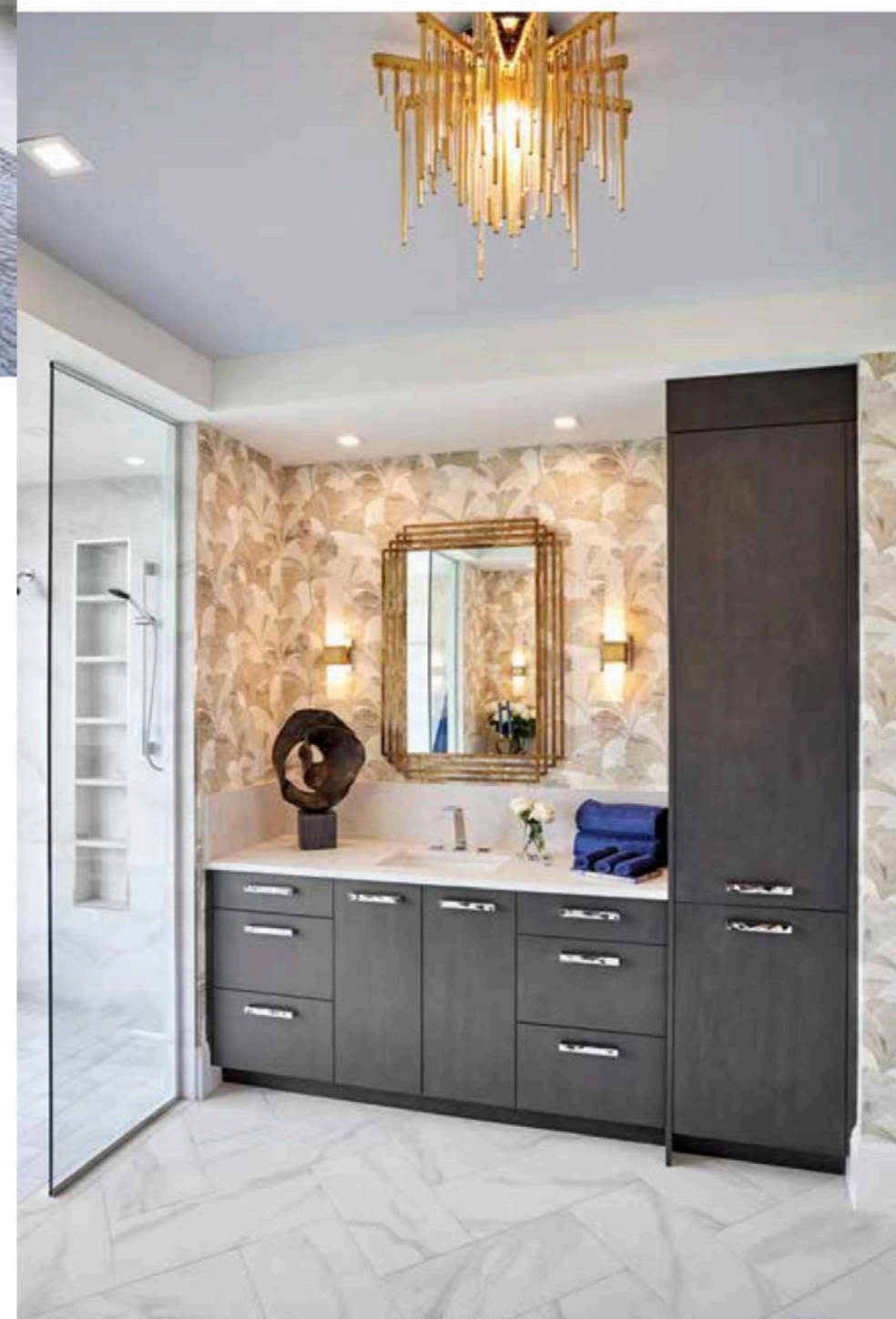


Primary Bedroom: Silk velvet, chosen for its variation in texture and subtle patterning, adorns the ceiling-high custom headboard in the primary bedroom, in front of a Phillip Jeffries wallcovering with a similar look. In this room, intricate trim on the ceiling adds to the Art Deco aesthetic, while touches of brass add elegance and continue the theme. Recessed window treatments frame the view of the water outside the patio doors leading to the lanai.

Primary Bathroom: Gingko-leaf wallpaper from Gianti Wallcoverings graces the wall behind the chocolate brown slab-door cabinetry in the primary bathroom, while a Hudson Valley light fixture adds elegant sparkle to the large-format marble floor tile and quartz countertop. A marble-clad shower features a deep soaking tub that offers high rise views of the neighboring golf course. The windows are specially tinted for added privacy, and the glass shower enclosure helps bring outside light into the room.



The space planning solutions the team devised to give the homeowners the separate areas they needed within one large, open shell were inspired by accepted design principles. “We created zones for different functions of entertaining using strategic ceiling details and furniture placement,” explains Guild, adding that these details were also carefully planned to honor the overall target design period and add excitement to the look. She continues, “Having a raw space to work with and considering how we were going to interpret the space was our favorite part of the project, as well as being able to bring timelessness to the design that was also fresh and exciting.” ▶





“The design is New York apartment meets Florida condo on the water,” says Interior Designer Lisa Guild of LMG Design Consulting.

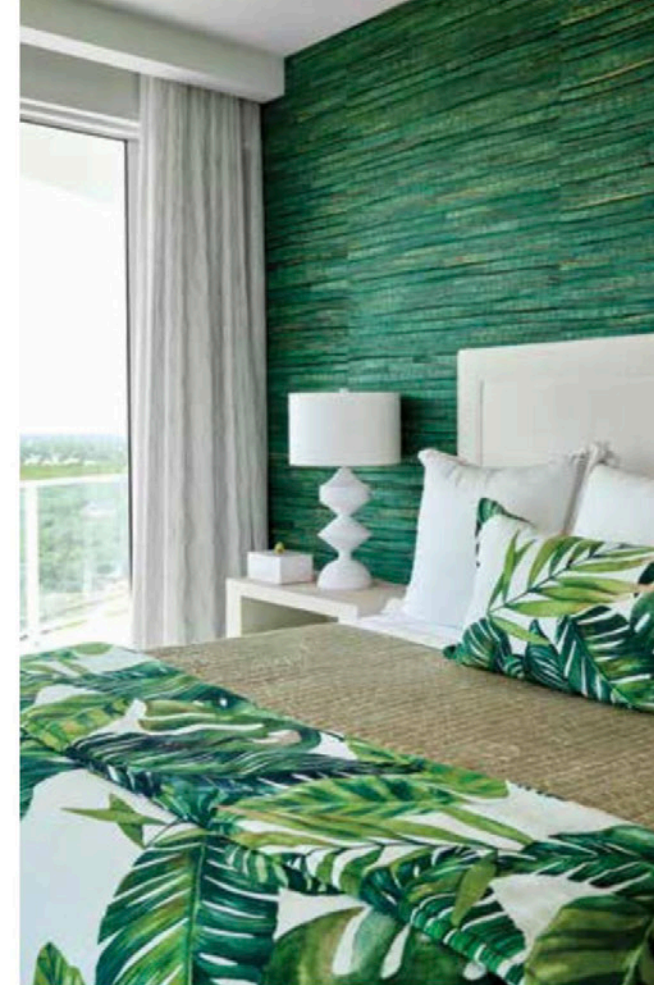


The final product is a stunning masterpiece of vibrant colors, elegant lines, rich finishes, and a seamless sense of continuity that honors the past, the present, and the particular loves and personalities of the people who call it home. ■

Her Office & Bathroom: An echo of the energetic pink from the entry and butler’s pantry enlivens the client’s office and adjoining bathroom. “The bookshelves contain mementos from her travels, so we wanted to keep the walls white to help these items stand out,” O’Brien says. “She’s invigorated by the color and surrounded by things she loves, and that makes the room a creative and inspiring place for her work.” The Kravet window treatments tie all the colors in the room together.



Guest Bedroom & Guest Bathroom: Another bold hue, emerald green, sets the theme for this guest bedroom and bath. “The wallpaper behind the bed was the inspiration for the room, and we brought in more of the same contemporary elements we used elsewhere to offset the tropical, casual feel,” Guild describes. The same green saturates the velvet Revelation side chair and bathroom wall color, although “here, the hardware was meant to be the story,” O’Brien says of the marble cabinet pulls.





Outdoor Living: Lloyd Flanders outdoor chairs in cobalt blue with gold accents, sourced from International Design Source, carry the home's signature colors to the patio. The same zone planning used throughout the rest of the home creates distinct areas for various activities. Three separate spaces are designed for conversation, eating or playing games, and outdoor cooking at the grill. The grill area is made of Dekton, a specialty stone material that is both durable and visually resembles marble.

Cabana: The design team was also asked to work its magic on the condo's dedicated cabana by the pool. "The cabana was designed to reflect our clients' travels and collections, and the unique items on the focal wall are from those trips," relates Guild. "The space is meant to be fun and eclectic, so we also chose to focus on unexpected elements like the ceilings rather than just pay attention to what's on the walls."

Cabana Kitchen & Bathroom: All of the blues the client loves are included in the cabana's color scheme, including in the hand-pieced glass mosaic tile from Artistic Tile used in the bath, the fun turquoise of the Smeg refrigerator, the Phillip Jeffries grasscloth backsplash in the kitchen, and the subtle sky-blue paint treatment on the ceiling that ties all of the individual elements together. The blue even appears in the margarita maker — essential equipment for a poolside hangout.

Written by Shawna Hampton
Photography by Small Snack Photography

Interior Designer:
LMG Design Consulting
6001 Taylor Road
Naples, FL 34109
239.293.0016
www.lmgdesignconsulting.com

Resources:
International Design Source
6001 Taylor Road
Naples, FL 34109
239.591.1114
www.ids1.com