

TREND RECAP

Cookbook



HIGH POINT MARKET
SPRING 2025

INTERNATIONAL
DESIGN SOURCE

Contents

MAJOR TRENDS

- 04 CURVACEOUS & GROUNDED
architectural, yet intimate
- 10 MATERIAL REVIVAL
nature reimagined through craft
- 14 ILLUMINATED ELEGANCE
lighting emerging as sculpture
- 18 OUTDOOR LUXE
make it patio couture
- 22 TAILORED TOUCHES
dressed to frill
- 24 GROUNDED STATEMENTS
24 Stacked & Staged
26 The Big Reveal
27 Work Worth Showing Off
- 28 COLOR NEWS

TRENDING

- 34 UP & COMING
trending and seen before
- 36 ART
- 38 ACCESSORIES
- 40 FABRIC & UPHOLSTERY
- 42 TEXTURAL EXCESS
- 42 COLOR
market stars and palette

MAJOR TRENDS



Curvaceous & Grounded

architectural, yet intimate

Organic, softened silhouettes continue to reign, now paired with deeper seats, low-slung frames, and ultra-tailored upholstery. Chairs, sofas, and even headboards feature pillow-soft curves and sensual lines that evoke a sense of repose and embrace.

BERNHARDT

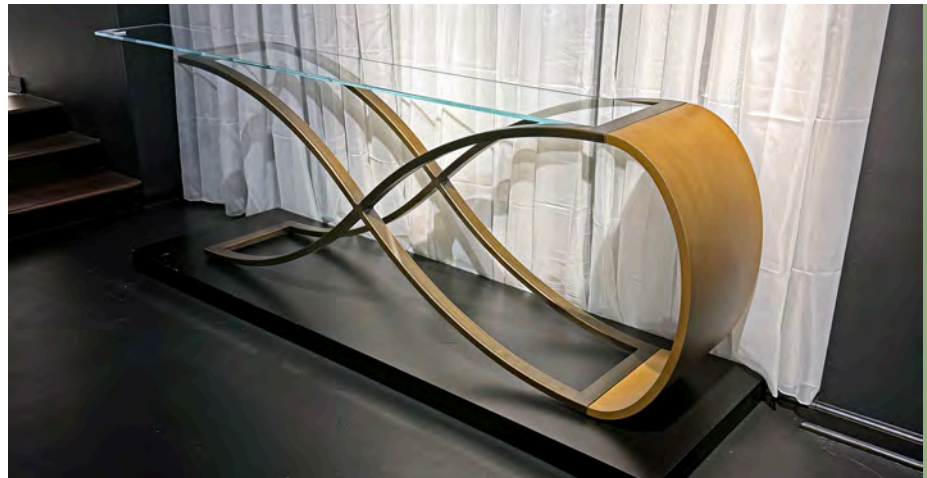
LIVING













Material Revival

nature reimagined through craft

Nature is not merely referenced—it's reimagined through deep walnut, ribbed woods, hammered metals, veined stone, raw fibers and earthy colors that evoke a layered, biomorphic intelligence. This eco-forward revival celebrates materiality as memory: textured, sculptural, and rooted in craft and sustainability.









Illuminated Elegance

lighting emerging as sculpture

Alabaster, blown glass, and layered metals elevate fixtures into fine art. Portable lighting, often in translucent finishes, underscores the shift toward flexible design.









Outdoor Luxe

make it patio couture

Outdoor collections embraced elegant simplicity—rope weaves, black-and-white contrasts, and sculptural teak elevated exteriors into sacred living spaces.
More vendors coming online with outdoor collections









Tailored Touches

dressed to frill

Refined detailing returned with flourish. From skirts and pleats to fringe welting, and trim these 2025 revivals softened sculptural forms with a wink to vintage glamour and bespoke couture.





Stacked & Staged

tables that rise to the occasion

Layered cocktail and coffee tables made a bold impact this season, using asymmetry, stacked silhouettes, and mixed materials to balance form with function—and a little flair.







The Big Reveal

headboards, footnotes, and full drama

Layered cocktail and coffee tables made a bold impact this season, using asymmetry, stacked silhouettes, and mixed materials to balance form with function—and a little flair.





Work
Worth
Showing
Off

*desks to
impress*





COLOR NEWS

trending hues

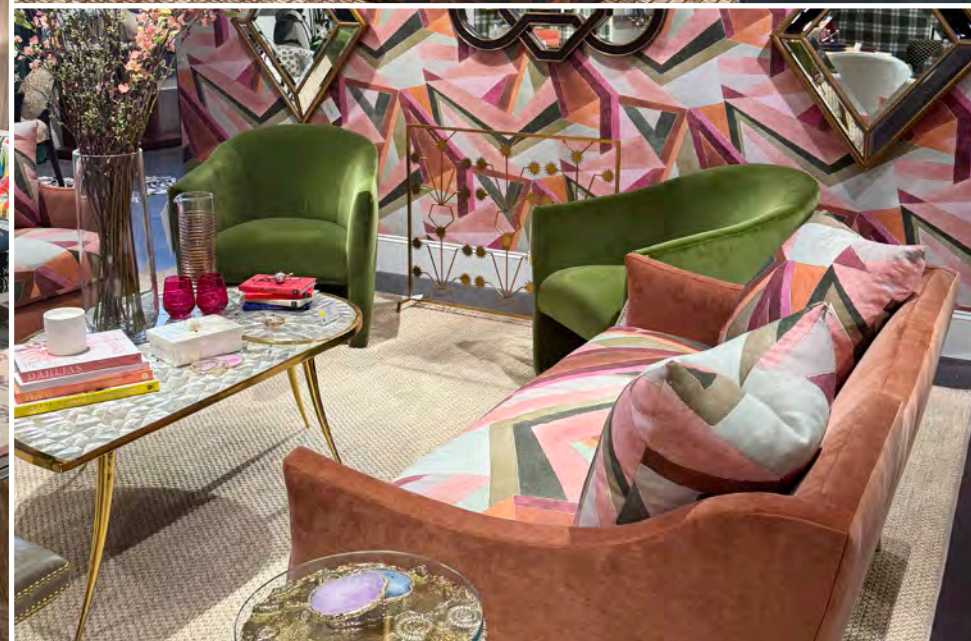
Mocha and honey cream sweeten the scene, greens get their glow-up, white takes a soft retreat, and jewel tones bring the glam.



BROWNS
ARE BACK

GLOWING GREEN





BE
JEWELLED



EDITOR'S CHOICE

Inspired looks and creative captures
from High Point.



TRENDING



- **Rewilding Decor**

Design elements that reflect organic chaos—mossy greens, twisted branches, cracked stone.

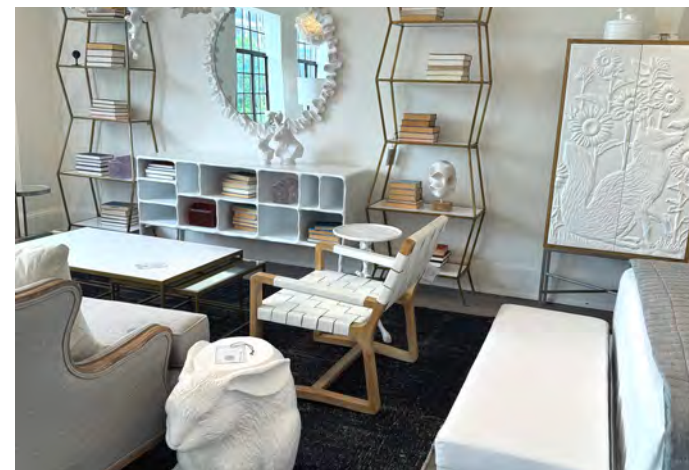
- **Emotive Design**

Pieces created not just for function or form, but for feeling—nostalgia, awe, comfort, or rebellion.

- **Midtone Comeback**

Honeyed walnuts and mid-oak tones balance the extremes of whitewash and espresso.



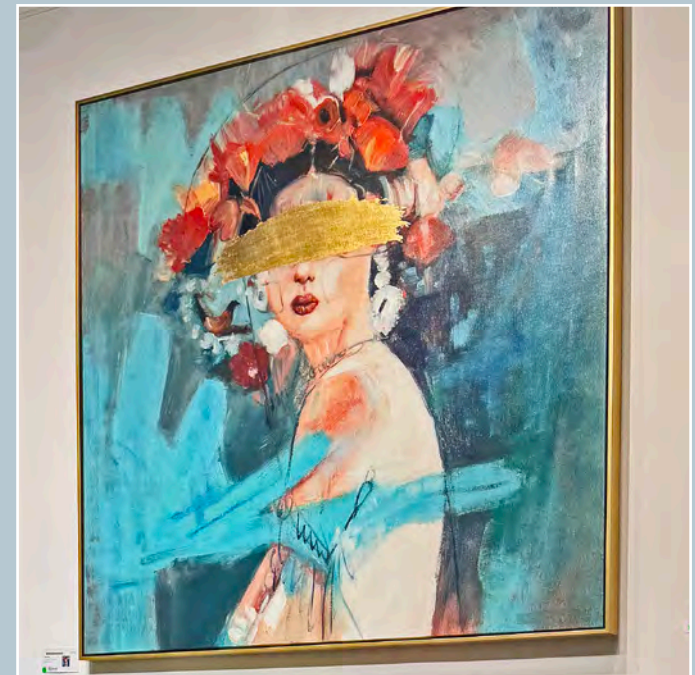
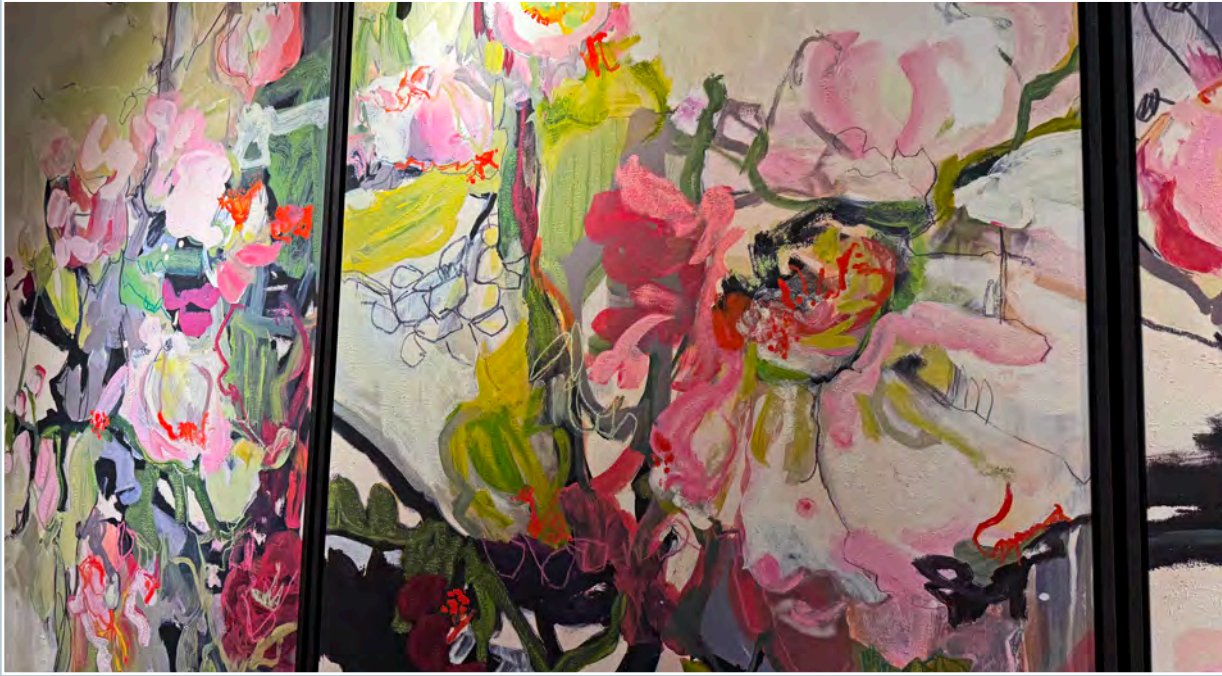


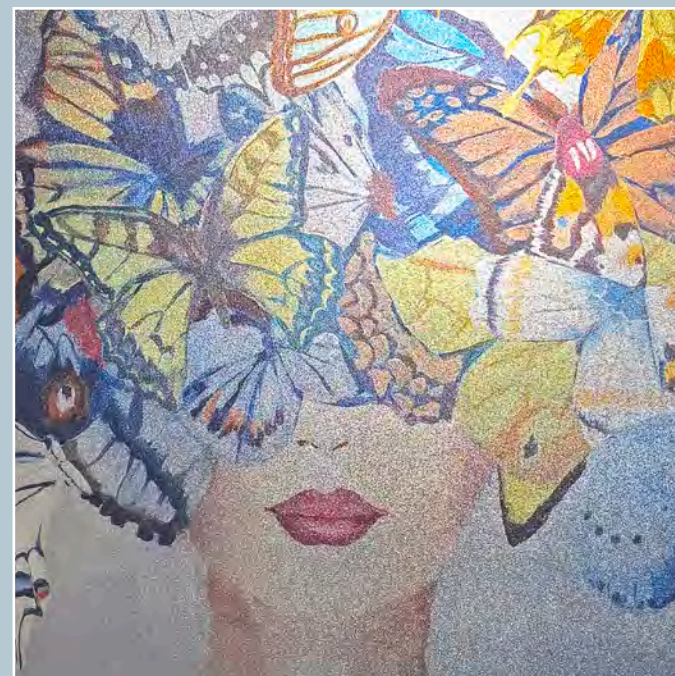
TRENDING VENDORS

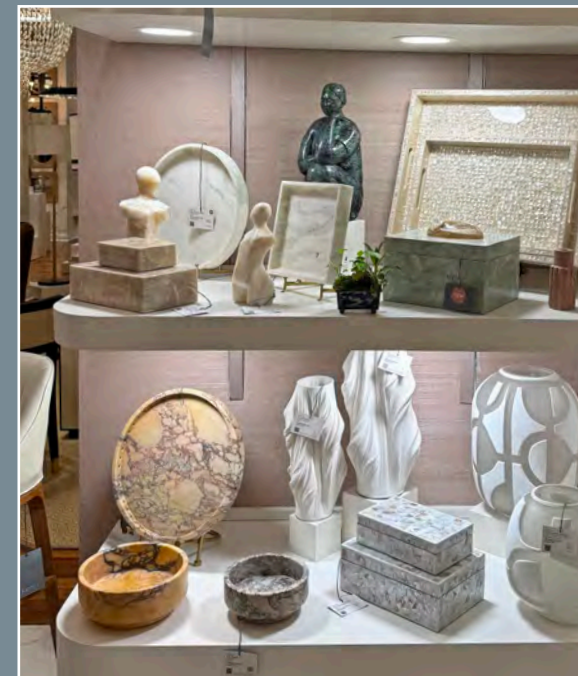
These recently added IDS boutique vendors were making a splash at Market. Stay tuned for featured coverage in the June 2025 Design Times.

- **Mr. Brown London**
Furniture, accessories, and lighting
- **Julian Chichester**
Furniture
- **Branch Home**
Furniture, accessories, and lighting
- **South + English**
Furniture, accessories, and art
- **Roberta Schilling**
Furniture and accessories

ART







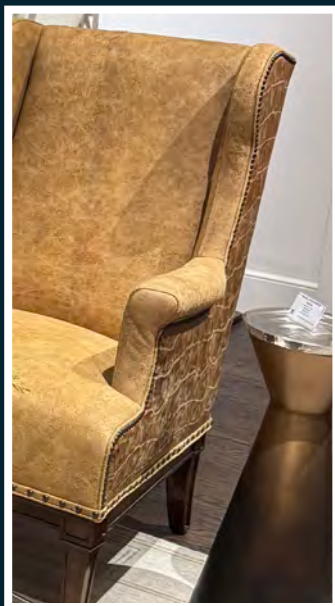
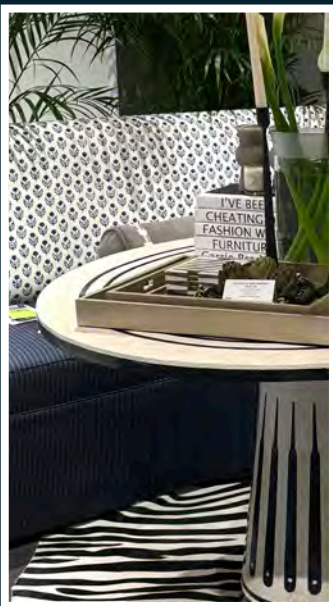
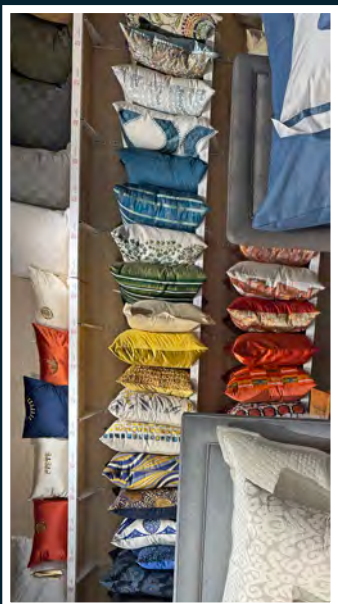


ACCESSORIES

FABRIC

& upholstery

- Plush **bouclé**, **velvet**, and **chenille** remain dominant.
- **Embroidered motifs** and **tapestry-like weaves** signal a storytelling turn.
- **Mixed finishes**—like fringe on bouclé or velvet with leather piping—add dimensionality.
- **Leather** in all colors and finishes from gloss to suede
- **Skirts, pleats, fringe**, and full-length **draping** were seen across a range of seating. These elements were often paired with modern shapes and luxe materials while referencing classic design while feeling intentional and current.



At its best, flattery is truth well dressed, and it is best dressed with fine fabrics.



Textural Excess







COLOR

BROWNS ARE BACK

From mocha mousse to espresso and terracotta, warm earth tones have supplanted gray as the dominant neutral.

GREEN

Emerald, sage, and celadon greens dominate, bringing the beauty of nature indoors.

CREAM > WHITE

Soft, antique-inspired creams replaced stark whites for a gentler, more lived-in base. However, white is making a come-back!

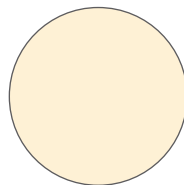
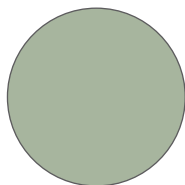
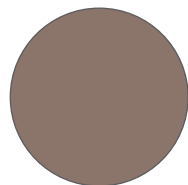
JEWEL ACCENTS

Emerald, oxblood, sapphire, and amethyst offered rich contrasts, often seen in velvet, lacquer, and glass.

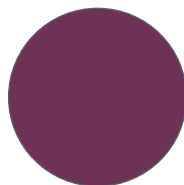
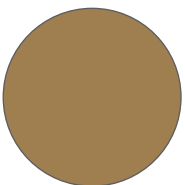
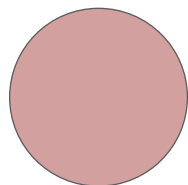
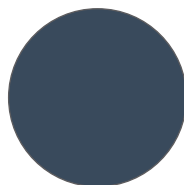
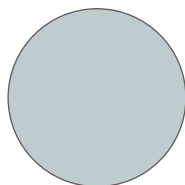
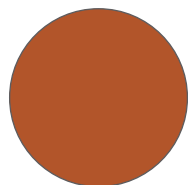
NATURE-INSPIRED NEUTRALS

Moss, bone, clay, and blackened metals grounded bolder palettes with mineral depth.

MARKET STARS



PALETTE



NAPLES
New Traditional Furniture 6001 Taylor Road, Naples, FL 34109
Hickory Chair Showroom 6062 Taylor Road, Naples, FL 34109
Contemporary Furniture 1939 Trade Center Way, Naples, FL 34109
Vanguard Studio 1939 Trade Center Way, Naples, FL 34109
Coastal Furniture 1959 Trade Center Way, Naples, FL 34109
Fabric, Marketplace & Rugs 2016 Trade Center Way, Naples, FL 34109

SARASOTA
Furniture 1734 Northgate Blvd., Sarasota, FL 34234
Fabric 1785 Northgate Blvd., Sarasota, FL 34234
Vanguard Studio 1785 Northgate Blvd., Sarasota, FL 34234
Rock House Designer Brands 1779 Independence Blvd., Sarasota, FL 34234
Marketplace 1781 Independence Blvd., Sarasota, FL 34234

INTERNATIONAL
DESIGN SOURCE



IDS1.com